



OLIVE LEAF  
LETTINGS  
LTD



10A New Street, Leicester, LE1 5NR

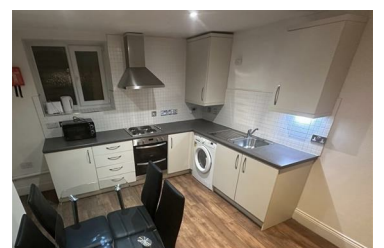
£900 Per month



Olive Leaf Lettings are please to offer this unique 2 bedroomed basement apartment in the heart of Leicester - Grade II listed, located in the heart of the Greyfriars Conservation Area, close to St Martin's Cathedral, the historic Guildhall, the fashionable St Martin's Square and "The Lanes" Shopping parade on Loseby Lane.

The basement of the town house dates back to the late C18, refronted and extended in 1894 for use as offices, and then converted into residential accommodation

The apartment has it own entrance leading down to a brick volted ceiling hallway/lobby with plenty of storage.



17 Sowters Lane, Burton on the Wolds, Leicestershire, LE12 5AL

Tel: 01163 262820 Email: [admin@oliveleaflettings.co.uk](mailto:admin@oliveleaflettings.co.uk) [www.oliveleaflettings.co.uk](http://www.oliveleaflettings.co.uk)